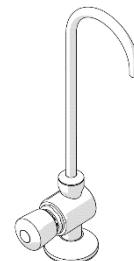


Ezy-Drink® CP-BS Lead Safe™ Hob Mounted Bottle/ Jug Filler Tap RH MI

PRODUCT CODES:

- 170.13.36.00



SPECIFICATIONS

- Chrome plated assembly for durability and easy cleaning
- Made from Lead Safe™ DR Brass*

IMPORTANT: All Ezy-Drink® Bottle Filler taps are tested in accordance with AS/NZS 3718 and leave our premises in good working order.

*Our Lead Safe™ product range is compliant with the Lead Free Requirements of the NCC 2022 Vol. Three, Clause A5G4(2) and NSF/ANSI 372

WARNINGS: Special attention to be paid on notes, photos, images, or drawings of assembly steps marked with the warning symbol.



TECHNICAL DATA

Inlet	G ½" – Male	
Outlet	Gooseneck	
Headworks	Push Button	
Working Pressure Range (kPa)	Min	50
	Max	500
Working Temperature Range (°C)	Min	5
	Max	60
Nominal Flow Rate (LPM)	4.01	
Construction	Brass	
Finish	Chrome	

NOTE: Galvin Engineering continually strives to improve their products. Specifications may change without notice.

TOOLS REQUIRED

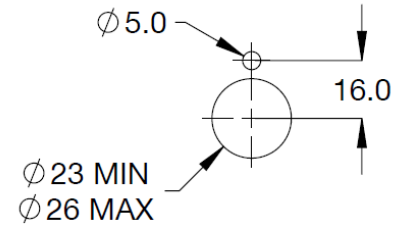
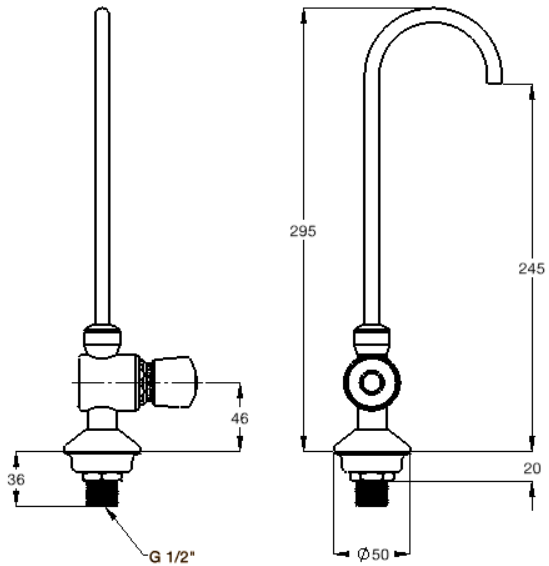
- Hex Key
- Adjustable spanner
- Power drill

PRE-INSTALLATION - MOUNTING DETAILS

- If the mounting holes do not already exist, mark out and drill the holes in the bench/trough as shown in dimensions.



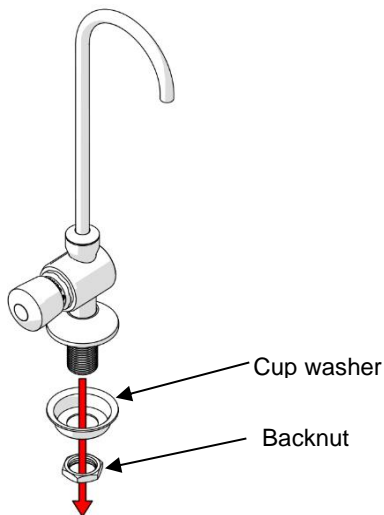
Note: Before installation, all lines must be flushed. We recommend that a line strainer be installed prior to the bottle filler tap to eliminate any foreign material.



Warning icon: Rough-in Dimensions

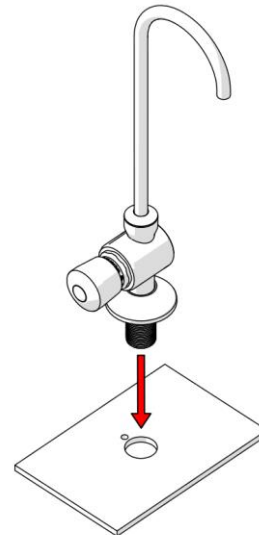
INSTALLATION

IMPORTANT: Galvin Engineering products must be installed in accordance with these installation instructions and in accordance with AS/NZS 3500, the PCA and your local regulatory requirements. Water and/or electrical supply conditions must also comply to the applicable national and/or state standards. Failing to comply with these provisions shall void the product warranty and may affect the performance of the product.



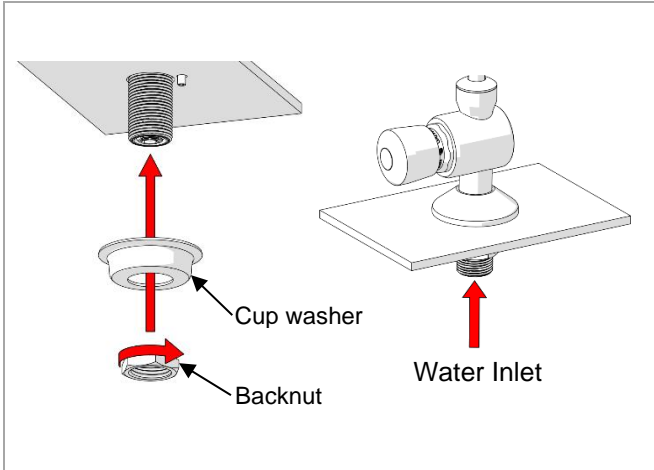
1. Disassemble

- Remove backnut & cup washer from assembly.



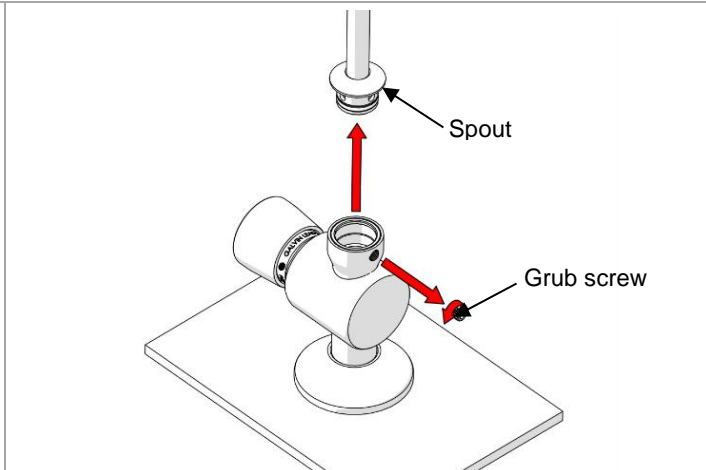
2. Fit bottle filler

- Align anti-rotation pin and fit bottle filler to basin as shown.



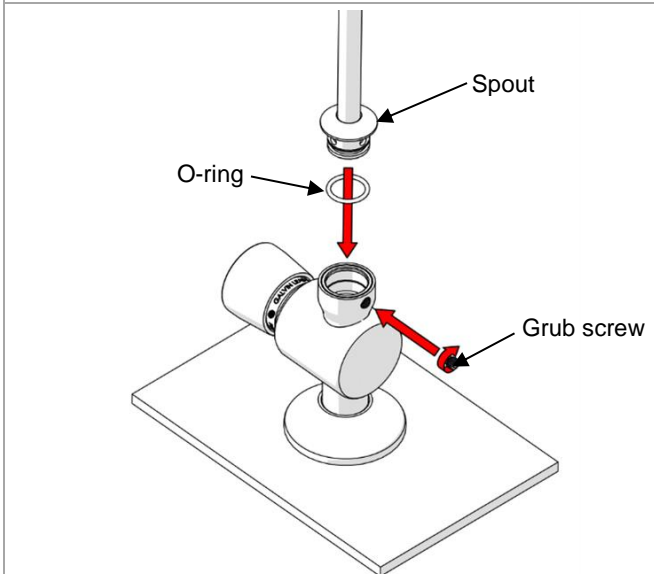
3. Secure bottle filler and connect water

- Fit cup washer and nut.
- Tighten assembly ensuring it cannot be turned once installed.
- Connect water inlet.



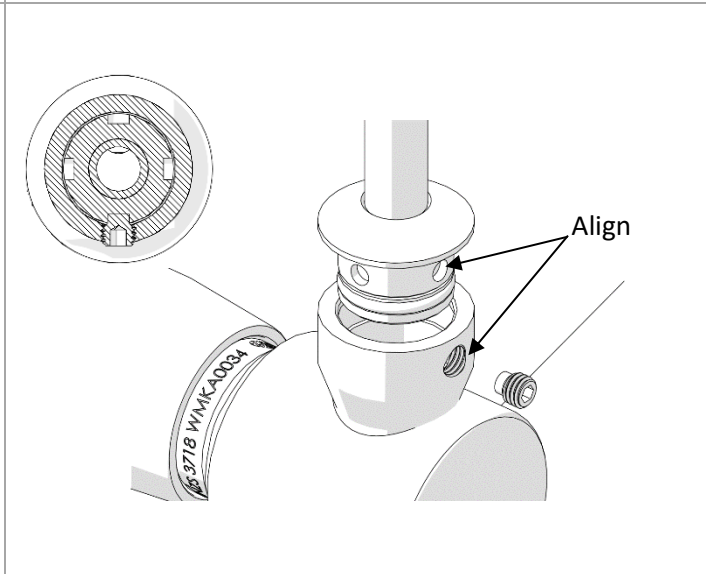
4. Remove spout

- Remove spout from assembly as shown.
- The spout can be rotated to 4 different positions to suit installation.



5. Fit & position spout

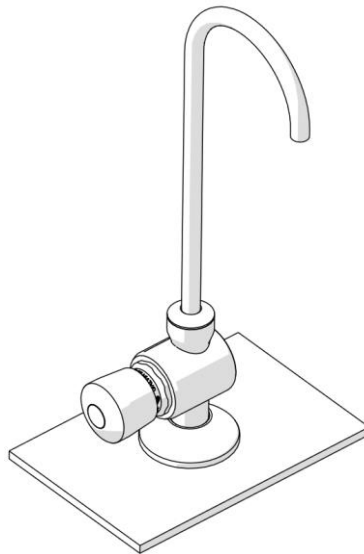
- Position the spout in the desired position ensuring the position hole lines up with the grub screw as shown.
- Ensure supplied O-ring is fitted to the filler inlet.
- Insert the filler assembly into the outlet.



6. Secure spout

- Once positioned and the alignment is correct (see above), tighten the grub screw to secure the outlet.

⚠ Note: We recommend a small amount of an AS4020 approved silicone grease is used on the O-ring before assembly to ensure ease of fitment.



7. Test

- Once the bottle filler has been installed, turn on mains water and check for leaks and correct operation.

TROUBLESHOOTING		
PROBLEM	CAUSE	RECTIFICATION
Leaks	Incorrectly installed	Follow the installation instructions and ensure the o-ring is correctly installed. Check for debris in the outlet.
Spout still rotates	Grub screw incorrectly installed	Ensure the spout inlet position hole is lined up with the outlet grub screw hole. Reinstall grub screw.
Water is not flowing	Water is turned off	Turn on water
Inconsistent flow	Blocked top assembly	Remove top assembly and clean.

WARRANTY

Galvin Engineering products are covered under our Manufacturer's Warranty. Galvin Engineering products must be installed in accordance with the installation instructions and in accordance with AS 3500 and NCC Volume Three, relevant Australian Standards and local authorities applicable to product being installed. Water and electrical supply conditions must also comply to the applicable national and/or state standards, failing to comply with these provisions may void the product warranty and affect performance of the product.

Please visit www.galvinengineering.com.au to view the full warranty, our Installation Compliance and Maintenance & Cleaning information as well as any other additional information.